



**EVX series**  
**EVX 12300 12V30AH**



**Valve Regulated Lead Acid Battery**

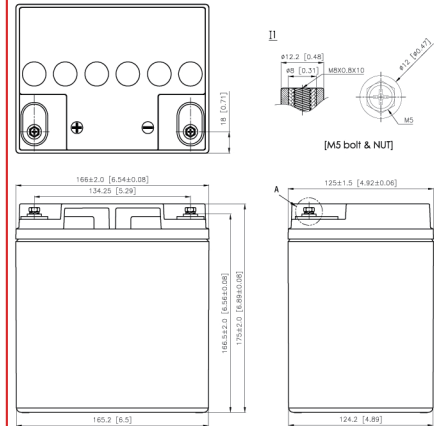
Maintenance-Free Sealed Lead Acid Battery.  
Absorbent Glass Mat (AGM) technology for efficient gas recombination of up to 99%.

**Design for Cyclic Applications**

<p><b>【 Design Life 】</b> 400 cycles @ 100%DOD at 25°C 1800 cycles @ 30%DOD at 25°C</p> <p><b>【 Operating Temperature Range 】</b> Nominal Operating Temperature : 25°C (77°F) Discharge : -15°C ~ 50°C (5°F~122°F) Charge: -15°C ~ 40°C (5°F~104°F) Storage: -15°C ~ 40°C (5°F~104°F)</p>	<p><b>【 Equalization Charging Voltage 】</b> 14.4 ~ 15.0 VDC/Unit at 25°C (77°F)</p> <p><b>【 Self Discharge 】</b> Less than 10% after 90 days, can be stored up to 6 months at 25°C (77°F); Fully recharging is required before usage, and charged sooner if stored at higher temperature than 25°C (77°F).</p>
---	--

**Specification**

Nominal Voltage	12V (6 cells per unit)		
Nominal Capacity	30 AH @20HR-rate to 1.75V per cell @25°C (77°F)		
Weight	Approx. 10.40 Kg (22.92 lbs)		
Maximum Discharge Current	400A (5sec)		
Internal Resistance	Approx. 7.9 mΩ		
Short Circuit Current	--		
Maximum Charge Current	9.00A		
Terminal types	I1 terminal to accept M5 bolt		
Terminal Breaking Torque	59 Kgf·cm / 51 lbf·in / 5.73 N·m		
Container Material	ABS (UL 94-HB)		
Dimensions	Length (L)	166.0±2.0 mm	6.54±0.08 inch
	Width (W)	125.0±1.5 mm	4.92±0.06 inch
	Container Height (h)	175.0±2.0 mm	6.89±0.08 inch
	Overall Height (H)	175.0±2.0 mm	6.89±0.08 inch



**Constant Current Discharge Characteristics Unit: A (25°C, 77°F)**

F.V/Time	30MIN	45MIN	60MIN	90MIN	2HR	3HR	4HR	5HR	6HR	8HR	10HR	20HR
1.60V	31.2	22.4	17.7	12.7	10.3	7.48	6.05	5.03	4.32	3.39	2.82	1.61
1.67V	30.6	21.9	17.3	12.3	9.94	7.26	5.87	4.90	4.20	3.29	2.75	1.58
1.70V	30.0	21.4	16.8	11.9	9.66	7.04	5.70	4.76	4.09	3.21	2.68	1.54
1.75V	29.2	20.8	16.3	11.6	9.38	6.83	5.54	4.64	3.98	3.12	2.61	1.50
1.80V	28.4	20.2	15.8	11.3	9.07	6.61	5.37	4.51	3.87	3.04	2.53	1.45
1.85V	27.6	19.5	15.3	10.9	8.79	6.40	5.21	4.39	3.76	2.94	2.46	1.41

**Constant Power Discharge Characteristics Unit: W (25°C, 77°F)**

F.V/Time	30MIN	45MIN	60MIN	90MIN	2HR	3HR	4HR	5HR	6HR	8HR	10HR	20HR
1.60V	374	268	212	152	123	89.8	72.6	60.4	51.5	40.1	33.1	17.3
1.67V	367	263	207	147	120	87.1	70.4	58.6	50.1	39.1	32.2	16.8
1.70V	359	256	202	143	116	84.5	68.4	57.1	48.8	38.1	31.4	16.4
1.75V	351	250	196	139	112	81.9	66.4	55.6	47.5	37.0	30.5	15.9
1.80V	341	242	190	135	109	79.3	64.4	54.1	46.1	35.9	29.5	15.4
1.85V	332	235	184	131	105	76.7	62.4	52.6	44.8	34.7	28.4	14.9

Please refer to the official site for the latest rating confirmation.

**Guang dong Xi shibi Power Co., Ltd.**

Tel: +86 20 34628335

Fax: 626-453-0409

E-mail: csbusa@battery.com